



## Specifications

<b>Series</b>	<b>S2KR Series</b>
<b>Actuation angle</b>	2-position: [Spring return] $60^\circ \pm 5^\circ$ [Maintained] $90^\circ \pm 5^\circ$ 3-position: [Spring return] $60^\circ \pm 5^\circ$ [Maintained] $90^\circ \pm 5^\circ$
<b>Actuation force</b>	0.5 kgf (4.9 N) (per 1 contact)
<b>Installation</b>	Extended
<b>Shock</b>	300 m/s <sup>2</sup> ( $\approx$ 30 G) in each X, Y, Z direction for 3 times
<b>Shock (malfunction)</b>	100 m/s <sup>2</sup> ( $\approx$ 10 G) in each X, Y, Z direction for 3 times
<b>Vibration</b>	1.5 mm double amplitude at frequency of 10 to 55 Hz in each X, Y, Z direction for 2 hours
<b>Vibration (malfunction)</b>	1.5 mm double amplitude at frequency of 10 to 55 Hz in each X, Y, Z direction for 10 minutes
<b>Mechanical life cycle (control unit life cycle)</b>	$\geq$ 100,000 operations (20 operations/min)
<b>Ambient temperature</b>	-15 to 55 °C, storage: -25 to 65 °C (no freezing or condensation)
<b>Ambient humidity</b>	35 to 85 %RH, storage: 35 to 85 %RH (no freezing or condensation)
<b>Protection structure</b>	Control unit: IP52 (IEC standard)
<b>Certification</b>	CE UK cTUVus ENEC PS
<b>Control unit weight</b>	$\approx$ 37 g
<b>Housing weight</b>	$\approx$ 7 g

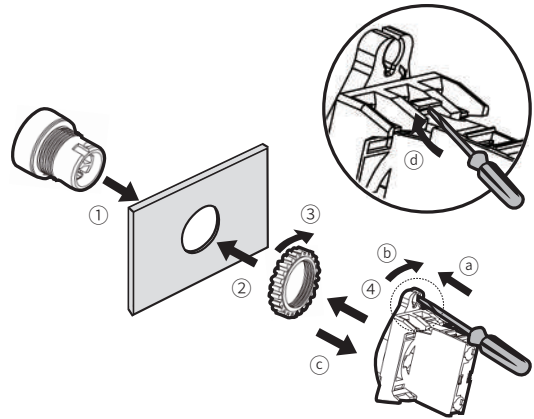
<b>Contact blocks</b>	
Power supply / current	110 VAC~ / 10 A, 250 VAC~ / 6 A
Dielectric strength	Between the charging part and the case : 3,000 VAC~ 50/60 Hz for 1 minute
Insulation resistance	$\geq$ 1,000 M $\Omega$ (500 VDC $\equiv$ megger)
Contact resistance	$\leq$ 20 m $\Omega$ (initial)
Electrical life cycle	$\geq$ 100,000 operations (20 operations/min)
Contact material	AgNi10
Certification	CE UK cTUVus ENEC PS
Weight	Modular type: $\approx$ 10 g, Singular type: $\approx$ 11 g

## Sold Separately

- Contact blocks (SA□-C□□)
- Switch enclosures (SA-□B□)
- Locking handle (SA□-LH)
- Switch washer (SA-SW□)

## Assembly / Disassembly

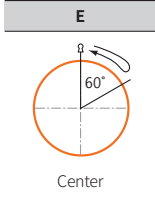
- Assembly order: ①→②→③→④
- Disassembly order: a→b→c→④



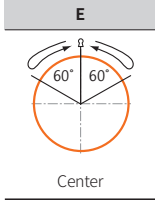
Control Switches	Panel thickness	Tightening torque
Ø 22/25/30 mm	Max. 6 mm	$\leq$ 1.96 N·m

## Key Removal Position

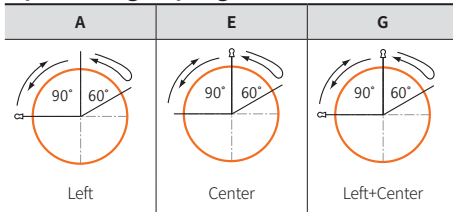
### 2-position spring return



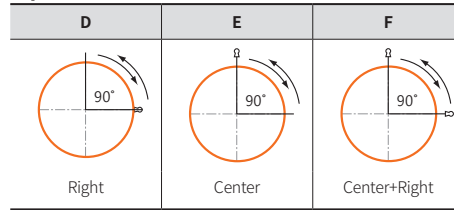
### 3-position two-way spring return



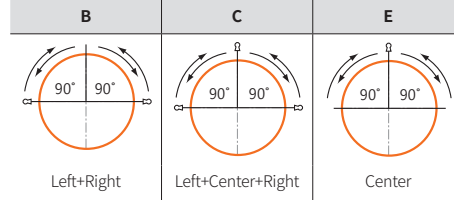
### 3-position right spring return



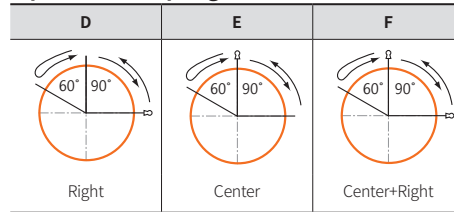
### 2-position Maintained



### 3-position Maintained



### 3-position left spring return



## Ordering Information

This is only for reference. For selecting the specified Model, follow the Autonics website.

Model is based on control unit+block combination. Control units or blocks are sold separately. In case of block, refer to control switch accessories.

<b>S2</b>	<b>①</b>	-	<b>②</b>	<b>③</b>	<b>④</b>	<b>⑤</b>	<b>⑥</b>
Control unit						Block	

### ① Switch type

KR: Round key selector switch (extended)

### ② Operation

- 1: 2-position spring return
- 2: 2-position maintained
- 3: 3-position two-way spring return
- 4: 3-position maintained
- 5: 3-position right spring return
- 6: 3-position left spring return

### ③ Key removal position

Refer to Key Removal Position.

### ④ Color

K: Black  
S: Silver

### ⑤ Contact block

A: 1 A contact  
2A: 2 A contacts  
B: 1 B contact  
2B: 2 B contacts  
AB: 1 A contact, 1 B contact

### ⑥ Block type

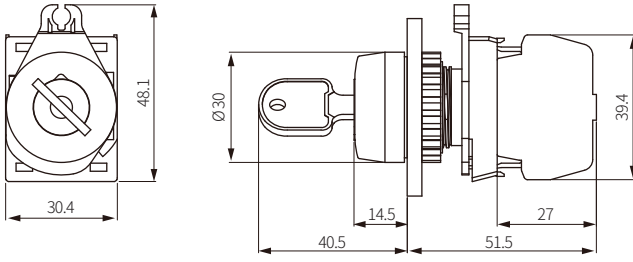
No mark: Singular type  
M: Modular type

Model	Contact block		LED block	
	A contact	B contact	AC/DC voltage	AC voltage
S2KR-1E□A(M)	1	-		
S2KR-1E□2A(M)	2	-		
S2KR-1E□B(M)	-	1	-	-
S2KR-1E□2B(M)	-	2		
S2KR-1E□AB(M)	1	1		
S2KR-2D□A(M)	1	-		
S2KR-2D□2A(M)	2	-		
S2KR-2D□B(M)	-	1	-	-
S2KR-2D□2B(M)	-	2		
S2KR-2D□AB(M)	1	1		
S2KR-2E□A(M)	1	-		
S2KR-2E□2A(M)	2	-		
S2KR-2E□B(M)	-	1	-	-
S2KR-2E□2B(M)	-	2		
S2KR-2E□AB(M)	1	1		
S2KR-2F□A(M)	1	-		
S2KR-2F□2A(M)	2	-		
S2KR-2F□B(M)	-	1	-	-
S2KR-2F□2B(M)	-	2		
S2KR-2F□AB(M)	1	1		
S2KR-3E□2A(M)	2	-		
S2KR-3E□2B(M)	-	2	-	-
S2KR-3E□AB(M)	1	1		
S2KR-4B□2A(M)	2	-		
S2KR-4B□2B(M)	-	2	-	-
S2KR-4B□AB(M)	1	1		
S2KR-4C□2A(M)	2	-		
S2KR-4C□2B(M)	-	2	-	-
S2KR-4C□AB(M)	1	1		
S2KR-4E□2A(M)	2	-		
S2KR-4E□2B(M)	-	2	-	-
S2KR-4E□AB(M)	1	1		
S2KR-5A□2A(M)	2	-		
S2KR-5A□2B(M)	-	2	-	-
S2KR-5A□AB(M)	1	1		
S2KR-5E□2A(M)	2	-		
S2KR-5E□2B(M)	-	2	-	-
S2KR-5E□AB(M)	1	1		
S2KR-5G□2A(M)	2	-		
S2KR-5G□2B(M)	-	2	-	-
S2KR-5G□AB(M)	1	1		
S2KR-6D□2A(M)	2	-		
S2KR-6D□2B(M)	-	2	-	-
S2KR-6D□AB(M)	1	1		
S2KR-6E□2A(M)	2	-		
S2KR-6E□2B(M)	-	2	-	-
S2KR-6E□AB(M)	1	1		
S2KR-6F□2A(M)	2	-		
S2KR-6F□2B(M)	-	2	-	-
S2KR-6F□AB(M)	1	1		

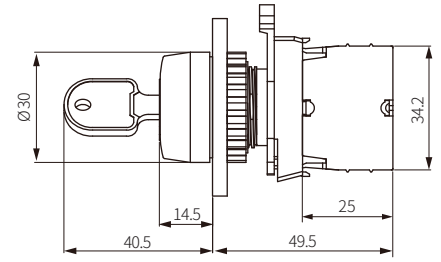
## Dimensions

- Unit: mm, For the detailed drawings, follow the Autonics website.
- Panel thickness:  $\leq 6$  mm

### ■ S2KR-□ (singular type block)

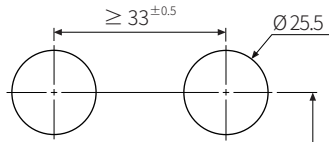


### ■ S2KR-□ M (modular type block)



### ■ Panel cut-out

<Mounting round:  $\varnothing 25$ >



<Mounting round:  $\varnothing 22$ >

